



# WHISPERING OAK ELEMENTARY

Media Center Collection Development Plan  
2023-24

---

Lee Montgomery  
Principal

---

Nimisha Chotai  
Certified Educational Media Specialist

# Table of Contents

---

<b>Table of Contents</b>	<b>2</b>
<b>Executive Summary</b>	<b>3</b>
District Strategic Plan 2025	3
School Collection Development Plan	3
<b>School Assessment Analysis</b>	<b>4</b>
<b>Collection Analysis</b>	<b>5</b>
<b>Collection Analysis by Category</b>	<b>6</b>
Notes	6
<b>Representation Analysis</b>	<b>7</b>
Results	7
<b>Strategic Focus</b>	<b>8</b>
<b>Budget and Purchasing Plan</b>	<b>9</b>
Annual Budget 2023-2024	9
Purchasing Plan 2023-2024	9
<b>Year-to-Year Collection Change</b>	<b>10</b>

# Executive Summary

---

## *District Strategic Plan 2025*

Orange County Public Schools is the eighth-largest school district in the United States and the fourth largest in Florida. The district serves more than 206,000 students at 202 schools and is one of the largest employers in Central Florida with more than 25,000 team members.

**Vision:** To ensure every student has a promising and successful future.

**Mission:** With the support of families and the community, we create enriching and diverse pathways to lead our students to success.

## *School Collection Development Plan*

WHISPERING OAK ELEMENTARY serves 795 students enrolled in grades Kindergarten through fifth. The student population's ethnicity is made of 27% Hispanic and 73% Non-Hispanic students. Additionally, we serve a diverse population made up of 77% White, 8% Black, 0% Native, 7% Asian, 1% Pacific, and 7% Multicultural students.

The administration includes Principal Lee Montgomery and Assistant Principal Constance Gary. WHISPERING OAK ELEMENTARY is proud to offer the many special programs that provide students with opportunities. These include Sunshine State Young Readers, Battle Books, AR, Chorus, News crew, and Safety Patrols, we also offer Golf club, Soccer, Dramatic Education, Tennis, Cheerleading, and G.O.T.R.

A thorough analysis of the current media center collection at WHISPERING OAK ELEMENTARY indicates that the average age of the collection is 2006 and the number of books per student is 19. The [American Association for School Libraries](#) has established a criteria for highly effective media centers that includes a ratio of 15-20 books available per student in the collection.

At this time, WHISPERING OAK ELEMENTARY does meet the recommended standards for the number of books per student.

The analysis of the collection also revealed the following areas of strengths and concerns:

- Our 3rd-5th grade students made gains on their testing scores in ELA, Math, and Science
- Our Fifth grade students made an increase from 79% to 93% in Science from the previous year
- Age of Collection
  - The average publication date of 2006 is acceptable but needs to be improved
- Fiction vs. Nonfiction
  - There are 3,000+ eBooks, audiobooks & digital magazines available in Sora.
  - This collection contains many of the titles suggested by the DOE list and the new B.E.S.T. Standards suggested readings.

- Categories of Concern

This collection requires updating:

- Easy/Everybody fiction books as its average age is 2003
  - Increasing the African -American and Hispanic Collection
- Weeding will focus on the OCPS Catalog Project as well as aged titles in fiction or nonfiction. The year of the collection due to neglected weeding of old copyright book sets and the reference shelf. When weeding is completed, the average age of the collection will greatly improve.

# School Assessment Analysis

The school analysis provides an overview of the school's assessment data for the previous two school years.

Proficiency Data							
Assessment	2021-22	Assessment	2022-23	Assessment	2021-22	Assessment	2022-23
		<b>Star Early Literacy Proficiency</b>	69%				
		<b>Star Reading Proficiency</b>	82%				
						<b>Star Math Proficiency</b>	80%
<b>FSA ELA Grade 3</b>	83%	<b>FAST ELA Proficiency Grade 3</b>	83%	<b>FSA Math Grade 3</b>	84%	<b>FAST Math Proficiency Grade 3</b>	92%
<b>FSA ELA Grade 4</b>	85%	<b>FAST ELA Proficiency Grade 4</b>	88%	<b>FSA Math Grade 4</b>	93%	<b>FAST Math Proficiency Grade 4</b>	86%
<b>FSA ELA Grade 5</b>	84%	<b>FAST ELA Proficiency Grade 5</b>	87%	<b>FSA Math Grade 5</b>	86%	<b>FAST Math Proficiency Grade 5</b>	94%
<b>NGSSS Sci 5 EOC</b>	79%	<b>NGSSS Sci 5 EOC</b>	93%				

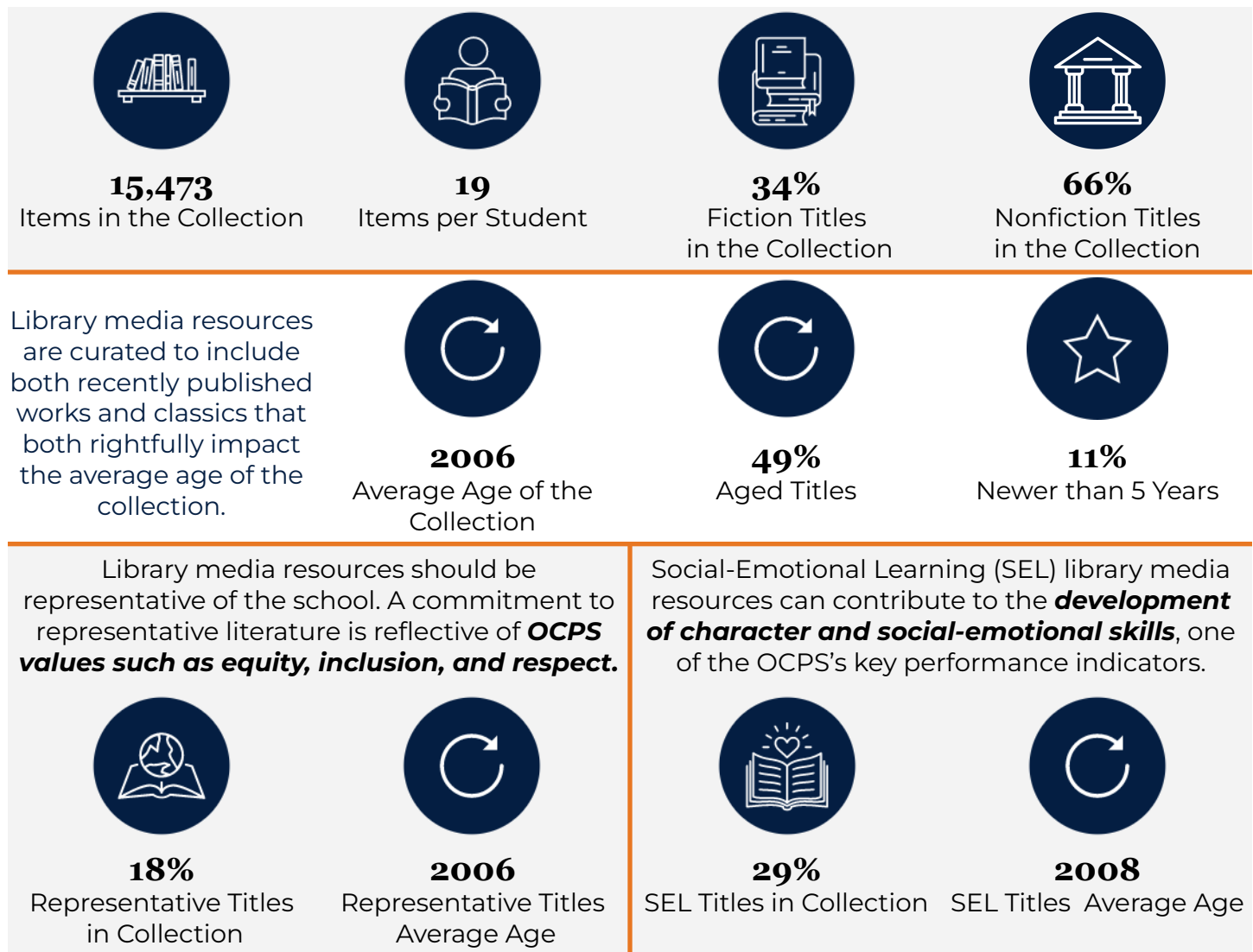
## Comparison between 2021-22 and 2022-23 Testing Data

(adapted from <https://www.fldoe.org/accountability/assessments/k-12-student-assessment/results/2023.stml>)

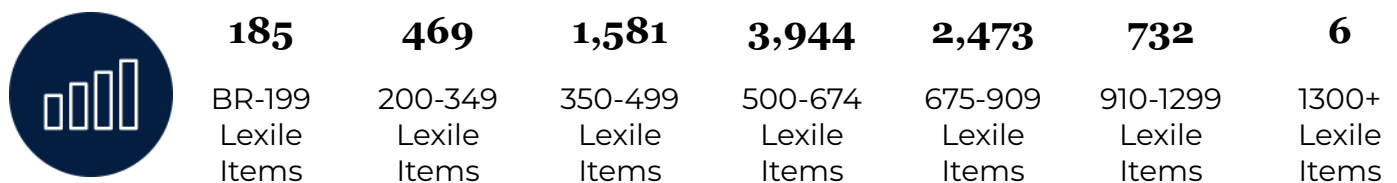
In 2023, the state transitioned from Florida Standards Assessments (FSA) to Florida Assessment of Student Thinking (FAST) for English Language Arts (ELA) and Mathematics. The 2022-23 for FAST and Benchmarks for Excellent Student Thinking (B.E.S.T.) End-of-Course (EOC) assessments are based on **provisional** achievement level cuts that are linked to each assessment's respective 2021-22 reporting scale. Comparisons should not be made between the 2023 data and previous years' data. The implementation of FAST K-2 in the 2022-23 school year was the first administration of statewide assessments for students in grades K-2. These assessments include Star Early Literacy Proficiency, Star Reading Proficiency, and Star Math Proficiency.

## Collection Analysis

The collection is developed for and influenced by students, their interests, academic needs, and alignment to the curriculum. The data below is a snapshot of the collection based on a Titlewise Analysis from July 2023. Purchasing or weeding after that time is not reflected in this data.



Library media resources are distributed across the ***Lexile reading level ranges*** noted below.



## Collection Analysis by Category

---

The information collected in this section provides a detailed look at the current library collection by classification and genre. The information was gathered from Follett Destiny, the library management system, and Titlewave, the vendor's ordering and analysis tool.

Section	# of Titles	Average Age
Computer Science, Information & General Works	44	2016
Philosophy & Psychology	62	2012
Religion	58	2007
Social Sciences	712	2003
Language	85	2000
Science	1,934	2006
Technology	767	2005
Arts & Recreation	403	2006
Literature	277	2001
History & Geography	874	2005
Biography	760	2010
Easy	4,340	2003
General Fiction	3,102	2011
Graphic Novels	217	2015

### Notes

- The average publication date of 2006 is acceptable but needs to be improved
- Computer Science, information & general works have been the most recently updated along with Graphic Novels and Biographies.
- The Everybody/Easy fiction books collection needs to be weeded and updated (2003)
- We have an extensive collection of classic literature that will skew our average age of books in the Social Sciences and Literature section.

# Representation Analysis

Enrollment & Demographic Data					
795 2023-24 Student Enrollment as of September 7, 2023	Subgroups		Federal Ethnicity		
	9% ELL	12% ESE	27% Hispanic	73% Non-Hispanic	
Federal Race Category					
77% White	8% Black	0% Native	7% Asian	1% Pacific	7% Multicultural

To deepen focus, on strategic collection development, specific sections of the collection were analyzed in detail to determine whether the media center collection reflects and represents various points of view and experiences. The goal is to provide a balanced collection that can be both a mirror, to reflect a reader's experience and a window, so readers can experience different viewpoints.

## Results

Based on the available school data of WHISPERING OAK ELEMENTARY in comparison to Collection Analysis results, it was found that:

Student Representation	% of Students	Total # of Titles	Total % of Titles	Avg. Age of Titles
Hispanic	27%	210	1.36%	2011
Black	8%	465	3%	2009
Asian	7%	61	1%	2010

- Additional titles for each subgroup of student diversity are present in the collection but they may not be reflected in the collection analysis.
- Hispanic students are 27% of the school’s population. However, we only have 1.36% of the characters or biographies that feature Hispanic people.
- Many of our students read in their native language as well as emerging second-language readers. There is a need to add additional dual-language titles in our collection.



## Strategic Focus

---

This page lists the priorities for selection and weeding for each school year and includes the action, updates, and outcomes. This is subject to change due to funding and time constraints.

School Year	Strategic Focus
2023-2024	<b>Selection Priorities</b> <ul style="list-style-type: none"><li>• Update Everybody/Easy collection</li><li>• Additional books that feature Hispanic authors, characters and/or content</li><li>• Dual language books for emerging second language readers</li><li>• Add newly published books through Birthday Book Club</li><li>• Add SSYRA books</li></ul>
	<b>Weeding Priorities</b> <ul style="list-style-type: none"><li>• Everybody/Easy Section</li><li>• Technology</li><li>• Literature</li></ul>
2024-2025	<b>Selection Priorities</b> <ul style="list-style-type: none"><li>• Additional books that feature Asian authors, characters and/or content</li><li>• Technology</li><li>• Literature</li><li>• Fiction</li></ul>
	<b>Weeding Priorities</b> <ul style="list-style-type: none"><li>• Science</li><li>• Language</li><li>• Fiction</li></ul>

## Budget and Purchasing Plan

---

This page outlines the current budget available and specifically lists the priorities for this school year (2023-2024).

### *Annual Budget 2023-2024*

State Funds	
<i>Source</i>	<i>Amount</i>
State (1001111000)	\$8,237
Internal Accounts	
<i>Source</i>	<i>Amount</i>
Book Fair Profits	\$10,045
Library Fines	\$2167
<b>TOTAL</b>	\$20,449

### *Purchasing Plan 2023-2024*

Approximate Purchasing Plan	
<i>Purpose</i>	<i>Amount</i>
Books that reflect our population	\$5,,000
Update Easy/ Everybody Collection	\$5,000
Update books that have been weeded	\$3,000
SSYRA Books 2024-25 and sequels	\$3,000
Any published books	\$3,000
<b>TOTAL</b>	\$19,000

## Year-to-Year Collection Change

The information below represents the year-to-year change within the library media center collection from the 2022-23 to 2023-24 school year. The 2022-23 data is based on a collection analysis from June 2022, while the 2023-24 is based on a collection analysis from July 2023.

### Data Reflection

- Aged titles and books in poor condition were weeded from the collection
- To maintain a current, useful, dynamic collection
- To adapt to changing needs and interests
- To accommodate changes to the curriculum
- To make the best use of shelf and floor space
- To improve the physical appearance of the collection
- To assess the collection's strengths and weaknesses
- To increase circulation

2022-23 Purchased and Weeded Materials		
Materials Added to the Collection	803	Materials Weeded from the Collection 1,301
Category	2022-23	2023-24
 <b>Items in the Collection</b>	16,025	15,473
 <b>Items per Student</b>	20	19
 <b>Average Age of Collection</b>	2006	2006
 <b>Representative Titles in the Collection</b>	18%	18%

