

School-To-Home Connection

These installation instructions are for parents and guardians who have been notified by their school that *Lexia Reading*® can be used at home. (International users will see *Lexia Reading UK*).

For more information (including technical troubleshooting), see <http://lexialearning.com/support/parents.html>

For assistance with the installation and usage of Lexia Reading, please contact your child's school.

1. Can your computer run Lexia Reading?

Macintosh

- Mac OS X 10.4 or higher

Windows

- Windows XP (SP3), Vista, Windows 7 (Professional and Ultimate)

Additional System Requirements

- At least 256 MB RAM
- At least 500 MB hard drive space
- Speakers or headset (headset recommended)
- 32 MB accelerated video graphics card or better

Do you filter content on your home computer?

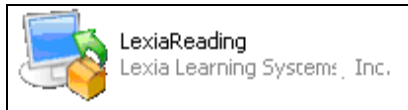
Please configure all content-filtering software, firewalls, and browsers on your home systems to allow access to *student.mylexia.com* and *update.lexialearning.com* via SSL (port 443).

2. Download Lexia Reading Installer

<http://www.lexialearning.com/support/lexiareading/license.html>

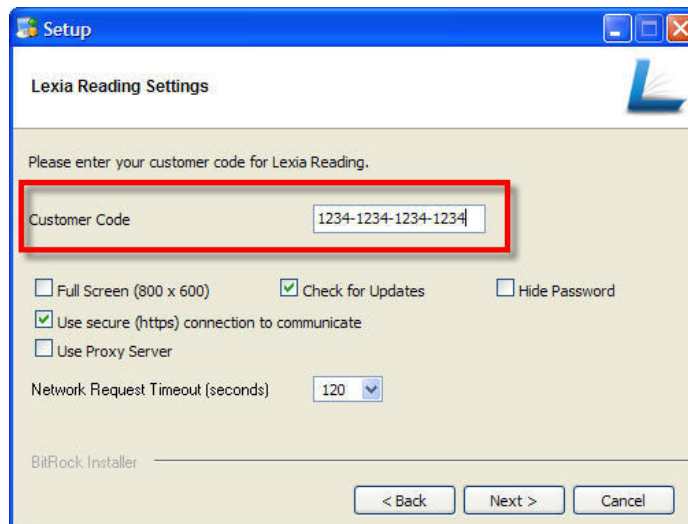
3. Install & Configure Lexia Reading

- a) **Windows:** Double-click the **Lexia Reading.exe** installer file that you downloaded.



You may receive a warning message from Windows, saying the publisher of the software is unknown. This is normal, and it is safe to click **OK** to continue with the install.

Follow the screen prompts until you see the **Customer Code** screen. Proceed to Step C.



Note: The Customer Code in this graphic is for example only.
See the next page for your school's Customer Code.

For more information, see <http://lexialearning.com/support/parents.html>
For assistance, please contact your child's school

- b) **Macintosh:** Double-click the **Lexia** volume (or **Lexia UK**) that you downloaded. Drag and drop the Lexia icon from the left to the Applications folder on the right to install.



In the Applications folder, click the Lexia icon. The Settings screen displays.



- c) **Windows and Macintosh:** Type in the **customer code** you received from the school (include dashes).

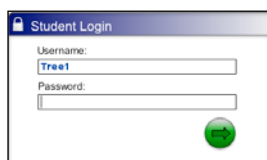
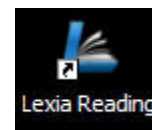
Customer Code: 9371 - 7582 - 5416 - 2519

No other changes are recommended. Do **not** configure any proxy settings.

- d) **Windows:** Follow the screen prompts to complete the installation.
Macintosh: Click **Save** to close the Settings screen.

4. Using the Lexia Reading Student Software

- a) Double-click the *Lexia Reading* icon on your desktop to launch the software.
b) Your child will need to type in their username and password to start.



Username: Student ID #

Password: mmddy (birthdate)

Note: *Lexia Reading* is intended for independent practice by the student with no assistance from parents or siblings. Please allow your child to work at their own pace without assistance.

Getting a 1029 error? Please see <http://lexialearning.com/products/mylexia/faqs/mcafee.html> for instructions on fixing this issue.